



Technical Benefits from Collaborative Working

Chris Sewell & Donovan Pearce

2nd June 2017

JACOBS[®]

www.jacobs.com | worldwide

Disclaimer

Important

The material in this presentation has been prepared by Jacobs®.

Copyright and other intellectual property rights in this presentation vest exclusively with Jacobs. Apart from any use permitted under applicable copyright legislation, no part of this work may in any form or by any means (electronic, graphic, mechanical, photocopying, recording or otherwise) be reproduced, copied, stored in a retrieval system or transmitted without prior written permission.

Jacobs is a trademark of Jacobs Engineering Group Inc.

© Copyright

June 5, 2017

Jacobs Engineering Group Inc. All rights reserved.

JACOBS™

Agenda

1. Overview of SMP M6 J16-19
2. A Unique Problem
3. Finding a Way Forward – Collaboration
4. Delivering the Solution
5. Lessons Learned
6. Q&A

Overview of SMP M6 J16-19

- Highways England Smart Motorway Programme
- M6 between Junctions 16 & 19 (19 miles)
 - Introducing All Lane Running and Advanced Directional Signage
- £167m-£212m value
- Joint Venture (CKJV & Jacobs)
- Sharing industry knowledge and best practices

A Unique Problem

- Poor quality survey data
 - Inherited from several years ago
 - Various errors across the site = no confidence
- A live construction site
 - Lane markings were essential, but were removed
 - You can't re-survey something that no longer exists
- Employing state of the art technologies
 - Digitally captures the site, brings it to the desktop
- Old erroneous data vs New incomplete data

Finding a Way Forward - Collaboration



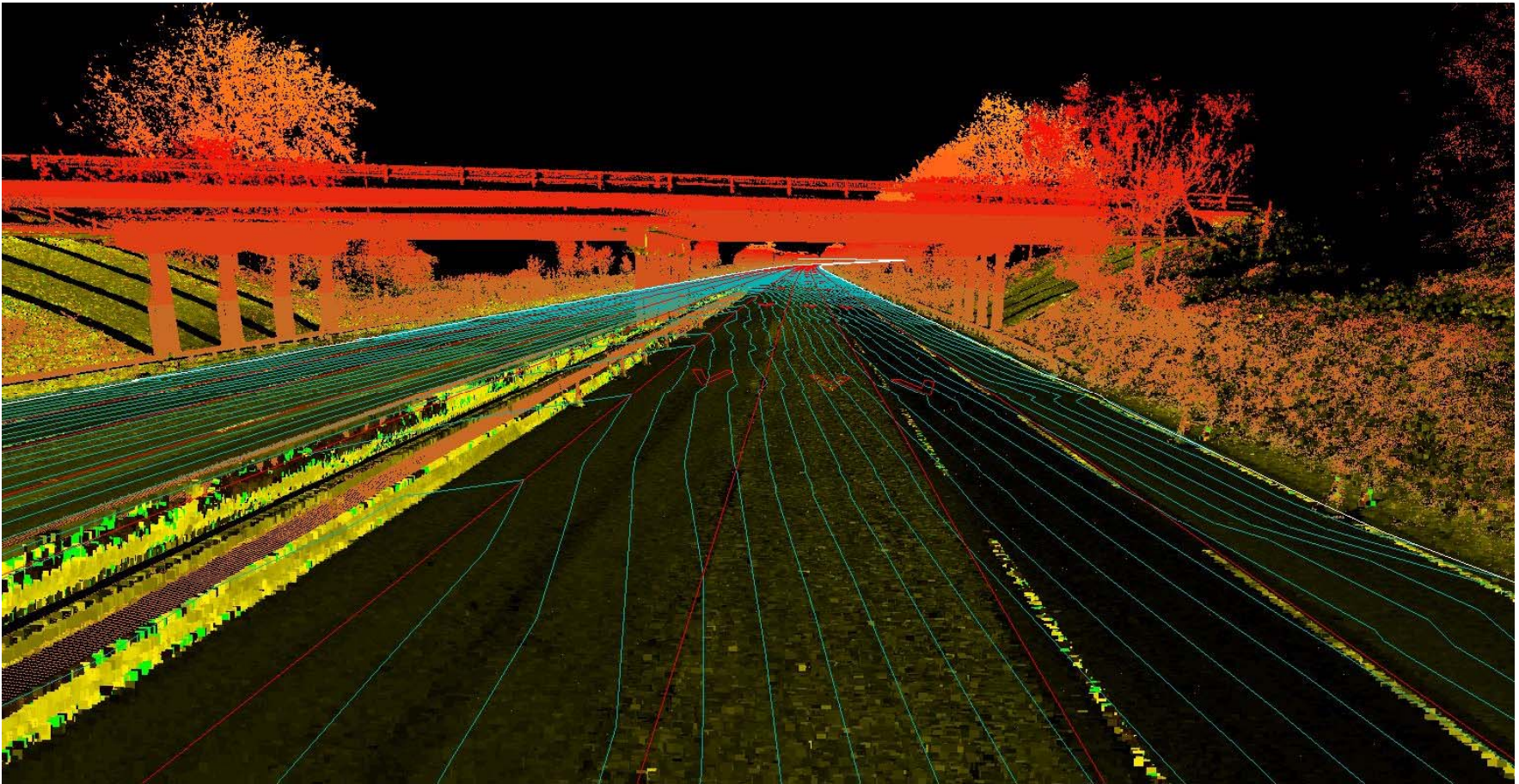
JACOBS[®]



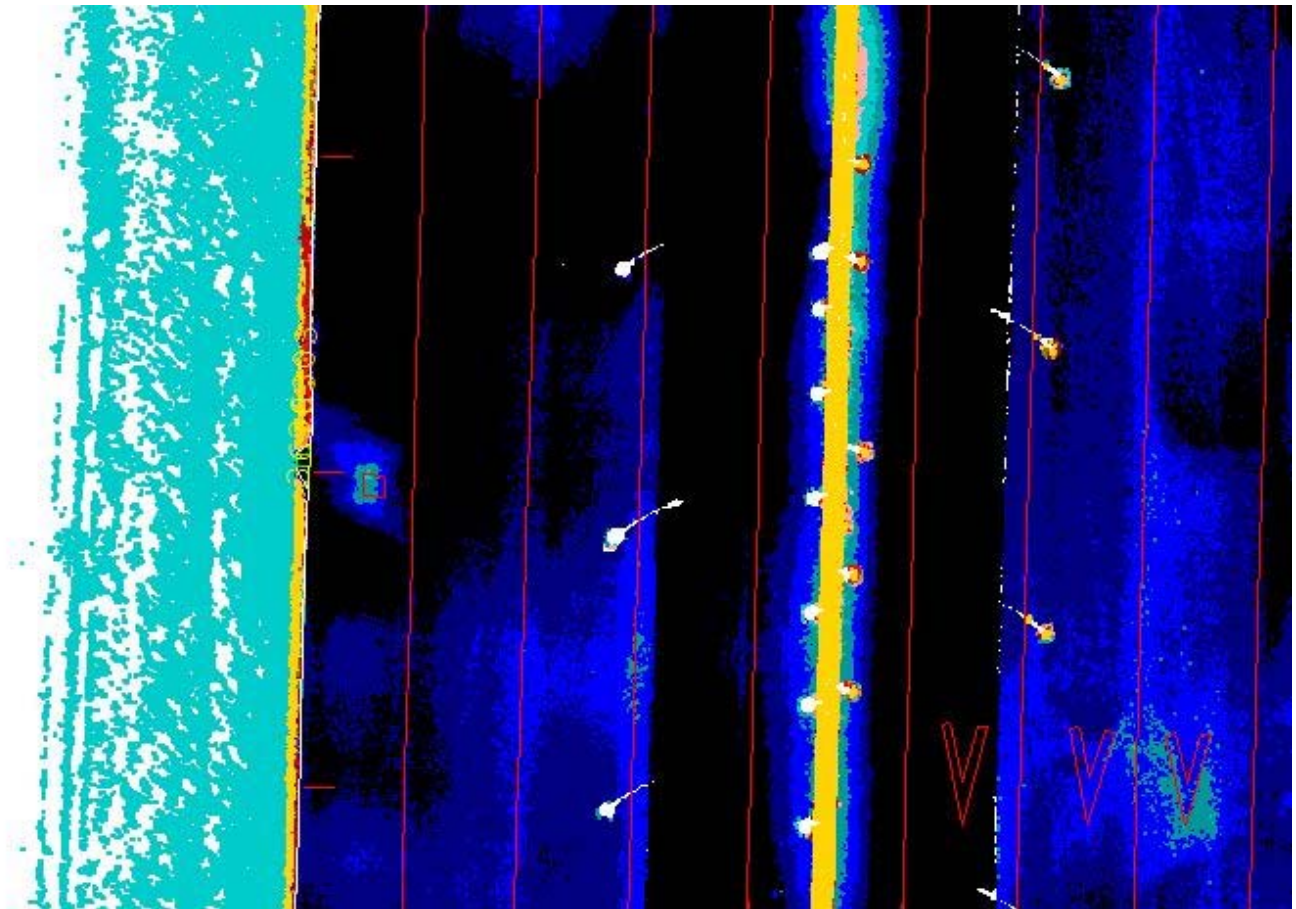
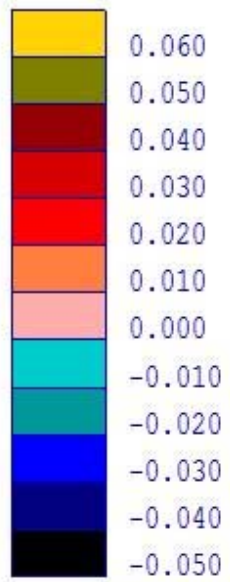
Delivering the Solution

- Specialist geospatial software
- Updated design models, in place of re-design
- Saved investment, training, and project delays
- Errors reduced from 50mm+ to between 0-10mm
 - Design risks minimised
- Regular communication between all parties

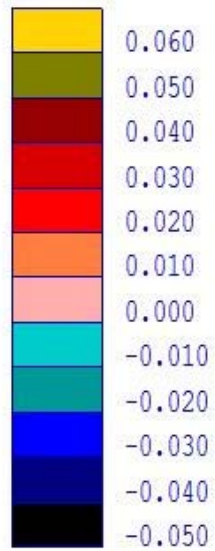
Delivering the Solution



Delivering the Solution



Delivering the Solution



Lessons Learned

- Ensure the survey data is accurate before using
 - Right first time, avoid reworks
 - Independent checks or validations
 - Risk mitigation
- Phased delivery
 - Large scheme, programme critical
 - Essential that workflow tested early
- Professional collaboration is key
- Published workflow for future reference

Thank you

© Copyright Jacobs
June 5, 2017

JACOBS

www.jacobs.com | worldwide